

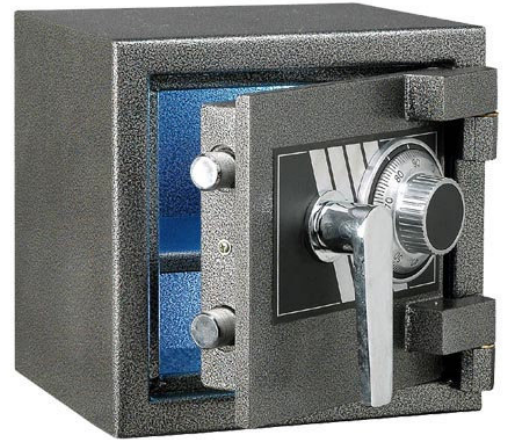
The New England Safe Company

Model AH-1-C

A well built compact personal safe that is great for limited spaces

Features

- 10 ¼ inches High x 10 ¼ inches Wide x 9 ½ inches Deep
- ½ " Thick door
- 1/8" Thick welded steel body
- Exterior hinges with dead bar to deter opening by hinge destruction
- Two 1" diameter steel Locking bolts
- UL listed Lagard group II dial combination lock
- ¼ " thick anti drill hard plate
- Adjustable shelf for organizing
- Anchoring holes pre drilled
- Chrome plated L handle
- PVC decorative plate
- Weight 38 lbs. (approx.)



UPGRADES AVAILABLE

Electronic locks are available as upgrade options to add time delay, time locked, multiple user, audit trail or biometric features.

CONTACT

info@www.newenglandsafe.com

WEBSITE

www.newenglandsafe.com

SOLD AT

Boston Lock & Safe Company Inc.

30 Lincoln Street

Brighton, MA 02135

Call 617-787-3400 for pricing

www.bostonlockandsafe.com

